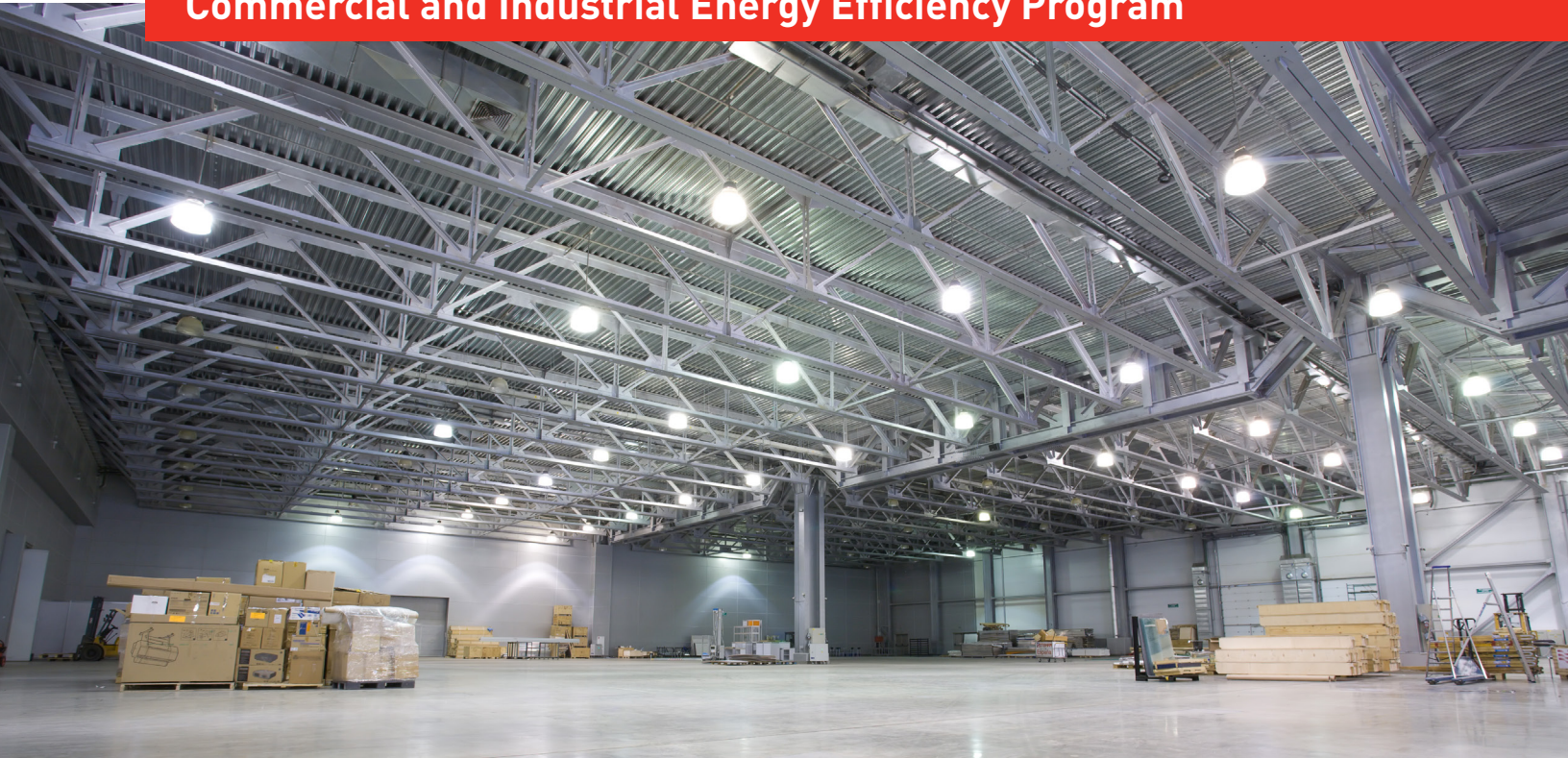




An **AEP** Company

Commercial and Industrial Energy Efficiency Program



INDIANA MICHIGAN POWER

Custom and Prescriptive Rebate Application

2024

For Michigan Only

Welcome to Indiana Michigan Power's Commercial and Industrial Program



Please follow the four-step process to apply for and obtain incentives for your energy efficiency projects.

The business must be a current electric commercial or industrial customer of Indiana Michigan Power to participate.

Incomplete applications cannot be processed for payment.

Notification of incomplete applications will be sent via email. Applicants will be given 15 business days to respond before the application is deemed ineligible. Applications must be received within 90 days of purchase and/or installation of measures. Preapproval application is required in advance of Custom projects.

Need help?

Call us at 833-997-0708
(Mon–Fri, 9 a.m.–5 p.m.) or email
SaveEnergyAtWork@aep.com

Submit one of two ways:



SaveEnergyAtWork@aep.com



I&M C&I Rebates
7128 Lakeview Pkwy Dr. W
Indianapolis, IN 46268

Project process:

1. Complete and submit the preapproval application.

Submit a preapproval application and all required documentation before making any purchases or starting any work on the project. Preapproval is required on *all* custom projects and is also required on prescriptive projects that receive a rebate of \$20,000 or more (signature required on page 4).

- Use the pages of this application to review general information (page 4) and pages for your project:
 - Prescriptive (pages 6–16)
 - Custom (page 17)
- An itemized quote from selected vendor that includes the quantity, size, type, make and model of proposed items and labor costs, if applicable. Internal labor cannot be included in project cost.
- The manufacturer (OEM) specification sheets for all eligible measures per program guidelines. Must have ENERGY STAR® or DLC energy efficiency certification to qualify for rebates.

2. Obtain preapproval notice.

Upon verifying that the project meets the program requirements, the customer and the contractor listed on this application will receive a letter via email (or standard mail if email is unavailable) indicating the funds are reserved for this project.

- Incomplete applications will result in delays
- Applications for prescriptive projects <\$20,000 calculated rebate do not require preapproval
- The preapproval letter must be signed by the customer and returned within 10 business days
- From the date of issuance of this letter, you have 90 days or until December 15, 2024, to complete and submit all final documentation. Applicant may submit a written request for one 30-day project completion extension.
- After 90 days or on December 15, 2024, this application expires and the reserved funds are forfeited

3. Install your project.

After signing and returning preapproval notification (if applicable to the project), remove the old equipment and install the new equipment. Incomplete applications will result in delays.

Only new products that are the exact product types listed in this application are eligible for prescriptive incentives.

4. Complete and submit the Completion Form.

Submit the completion form (page 18), including all project invoices, after the project is completed.

For Michigan Only

Custom and Prescriptive Rebate Application
Submit applications by email to SaveEnergyAtWork@aep.com

Terms and Conditions

ELIGIBILITY: Indiana Michigan Power ("I&M") energy efficiency incentives are offered to qualifying electric customers only while funding is available. Projects must be implemented (completed) by December 15, 2024. All application documentation must be submitted within 90 days of project completion or by December 15, 2024. Projects must reduce electric usage through system efficiency improvements; control upgrades may also qualify. The following measures will not qualify: peak shaving, demand reductions, fuel switching, power generation, renewable energy, or operating schedule changes. Equipment must meet the minimum number of annual operating hours.

COMPLIANCE: All projects must comply with applicable federal, state, and local laws and building codes. All equipment must be new or retrofitted with new components per program specification. Used or rebuilt equipment is not eligible for incentives. Existing equipment must be removed or permanently disconnected. New equipment must meet specification requirements and existing equipment must be operational when the application is submitted. Only one incentive will be granted for each project. Customers can submit multiple projects in a calendar year; however, the incentive totals cannot exceed the incentive limit cap per year. If the project is in a leased building, the lease term must be at least three (3) years and a copy of the lease may be requested. Up to 24 months of utility usage information may be requested.

INCENTIVE CAPS: Incentive caps up to 75% cost coverage for all projects including materials, external labor, permits, equipment rental or disposal. Custom incentives will not be provided for projects with less than a 1-year simple payback or greater than an 8-year simple payback. Retro-commissioning measures are not required to meet these payback guidelines. Incentives are limited to an annual \$150,000 cap per site or \$300,000 cap if your business has multiple sites participating, while Program funding is available.

INSPECTION: Program staff reserves the right to conduct pre-inspections and post inspections of proposed and installed projects.

PUBLICITY: I&M reserves the right to publicize your participation in this program, unless you specifically request otherwise.

LOGO USE: Customers or allies may not use the I&M name or logo nor that of any participating utilities in any marketing, advertising, or promotional material without written permission. If interested in co-branding, please contact I&M at SaveEnergyAtWork@aep.com for permission.

PROGRAM DISCRETION: Incentives are available on a first-come, first-served basis. Incentive amounts and offerings are subject to change or termination without notice at the discretion of I&M. Projects are subject to evaluation for the reasonableness of labor and installation costs compared to regional averages.

PAYMENT: Once completed paperwork is submitted, incentive payments

are usually made within 6 to 8 weeks. Incomplete applications will delay payments or result in denial of application approval. I&M reserves the right to refuse payment and participation if the customer or contractor violates program terms and conditions. I&M must receive 100% of the energy savings for the rated life of the product(s) or for a period of three (3) years from the receipt of incentive, whichever is less. If you do not provide the energy savings, the facility in which the installed projects are located closes or ceases operation within three (3) years from receipt of incentive, or you cease to be a customer of I&M within the three (3) years, you shall refund a prorated amount of the incentive.

RELEASE/INDEMNIFICATION: Payment of rebates under the Program and/or evaluation of applications for rebates shall not deem I&M or any of its affiliates, employees, contractors or agents ("I&M Parties") to be responsible for any work completed in connection herewith. Applicant fully releases I&M Parties from any and all claims it may have against I&M Parties in connection with this application, the rebates or the work performed in connection with them. In addition, applicant agrees to defend, indemnify and hold I&M Parties harmless from and against any and all claims, losses, demands or lawsuits by any third parties arising in connection with this application, the payment or non-payment of rebates, or any work performed in connection with them. The customer hereby releases I&M and participating utilities from any and all liability arising from or connected with releasing the information to I&M set forth herein.

For Michigan Only

Custom and Prescriptive Rebate Application
Submit applications by email to SaveEnergyAtWork@aep.com

Preapproval Application General Information



CUSTOMER INFORMATION <i>(Please complete all fields.)</i>				
Company Name <i>(as it appears on utility bill)</i>			Tax Payer ID <i>(FEIN or SS#)</i>	
Contact	Email		Phone Number	
Mailing Address			City	State ZIP
Installation Address <i>(if different)</i>			City	State ZIP
Utility Account Number	Electric Utility Indiana Michigan Power		Annual Hours of Operation	Bldg Area <i>(sq. ft.)</i>
Building Use <input type="checkbox"/> Office <input type="checkbox"/> Grocery/supermarket <input type="checkbox"/> Healthcare <input type="checkbox"/> Restaurant <input type="checkbox"/> Warehouse <input type="checkbox"/> Manufacturing <input type="checkbox"/> School <input type="checkbox"/> Lodging <input type="checkbox"/> Other <input type="checkbox"/> Retail			How Did You Learn About This Program? <input type="checkbox"/> Indiana Michigan Power <input type="checkbox"/> Newspaper <input type="checkbox"/> Indiana Michigan Power website <input type="checkbox"/> Community event <input type="checkbox"/> Mail/bill insert <input type="checkbox"/> Other <input type="checkbox"/> Contractor	

CONTRACTOR INFORMATION <i>(If applicable)</i>				
Company Name				
Contact	Email		Phone Number	
Address			City	State ZIP

INITIAL APPLICATION PROJECT SUMMARY		
Estimated Project Completion Date <i>(required)</i>	Prescriptive Project Total Cost \$	Prescriptive Incentive Total \$
	Custom Project Total Cost \$	Custom Incentive Total \$
	Total Project Cost \$	Total Incentive \$

I hereby certify that the information contained in this application is accurate and complete, all rules of this incentive program will be followed, and I have read and understand the terms and conditions.

I AGREE TO VERIFICATION OF EQUIPMENT INSTALLATION, WHICH MAY INCLUDE A SITE INSPECTION BY A PROGRAM OR UTILITY REPRESENTATIVE. I UNDERSTAND THAT I AM NOT ALLOWED TO RECEIVE MORE THAN ONE INCENTIVE FROM THIS PROGRAM ON ANY PIECE OF EQUIPMENT. I HEREBY AGREE TO INDEMNIFY, HOLD HARMLESS, AND RELEASE THE UTILITY FROM ANY ACTIONS OR CLAIMS IN REGARD TO THE INSTALLATION, OPERATION, AND DISPOSAL OF EQUIPMENT (AND RELATED MATERIALS) COVERED HEREIN, INCLUDING LIABILITY FROM ANY INCIDENTAL OR CONSEQUENTIAL DAMAGE.

Customer Signature	Print Name	Project Completion Date
--------------------	------------	-------------------------

For additional information about eligibility and incentive caps, see Terms & Conditions.

For Michigan Only

Table of Contents

Part 1: Lighting	6
Part 2: HVAC Systems	8
Part 3: Commercial Refrigeration	11
Part 4: Commercial Kitchen Equipment	12
Part 5: Water Heating	13
Part 6: Compressed Air	13
Part 7: Injection Molding.....	15
Part 8: Miscellaneous	16
Custom Rebate Worksheet	17
Completion Form.....	18

For Michigan Only

Part 1: Lighting

Interior Lighting

Measure	Incentive	Unit	# of Units	Total Incentive
Delamp Fluorescent Fixture Average Lamp Wattage	\$3.50	per lamp		
LED 2x2 Light Fixture Replacing 2x2 U-Tube 2L T8/T12 Fixture	\$5.00	per fixture		
LED 2X4 Light Fixture Replacing 3L 4 ft. 32 W T8/T12 Fixture	\$8.00	per fixture		
LED 2X4 Light Fixture Replacing 4L 4 ft. 32 W T8/T12 Fixture	\$11.00	per fixture		
LED 2X4 Light Fixture Replacing 6L 4 ft. 32 W T8/T12 Fixture	\$20.00	per fixture		
LED 2X4 Light Fixture Replacing 8L 4 ft. 32 W T8/T12 Fixture	\$25.00	per fixture		
LED 2X4 Light Fixture Replacing 10L 4 ft. 32 W T8/T12 Fixture	\$45.00	per fixture		
LED Downlight Fixture	\$15.00	per fixture		
LED High Bay Fixture	\$75.00	per fixture		
LED Low Bay Fixture	\$65.00	per fixture		
LED Mogul-base HID Lamp Replacing High Bay HID Lamp	\$50.00	per lamp		
LED Mogul-base HID Lamp Replacing Low Bay HID Lamp	\$50.00	per lamp		
LED MR16 Replacing Incandescent Lamp/Halogen Lamp	\$1.00	per bulb		
LED Troffer Retrofit Kit, 2'X2' and 2'X4'	\$25.00	per fixture		
LED Troffer, 2'X2' and 2'X4'	\$25.00	per fixture		
LED Tube Relamp ≤ 4 ft. Replacing High Output 4 ft. T5/T8 Tube	\$7.50	per tube		
Replace 400 W HID with LED (Retrofit Kit) Interior	\$45.00	per lamp		
Replace Interior Fixture ≤ 175 W HID with LED	\$40.00	per fixture		
Replace Interior Fixture 176 W–250 W HID with LED	\$65.00	per fixture		
Replace Interior Fixture 251 W–400 W HID with LED	\$75.00	per fixture		
T5 2 ft. Linear Tube Replacing Fluorescent	\$3.00	per lamp		
T5 4 ft. Linear Tube Replacing Fluorescent Type A	\$4.50	per lamp		
T5 4 ft. Linear Tube Replacing Fluorescent Type B	\$5.00	per lamp		
T5 4 ft. Linear Tube Replacing Fluorescent Type C	\$6.00	per lamp		
T8 2 ft. Linear Tube Replacing Fluorescent	\$3.00	per lamp		
T8 4 ft. Linear Tube Replacing Fluorescent Type A	\$4.00	per lamp		
T8 4 ft. Linear Tube Replacing Fluorescent Type B	\$4.50	per lamp		
T8 4 ft. Linear Tube Replacing Fluorescent Type C	\$5.00	per lamp		
T12 2 ft. Linear Tube Replacing Fluorescent	\$5.00	per lamp		

For Michigan Only

Interior Lighting, continued

T12 4 ft. Linear Tube Replacing Fluorescent Type A	\$5.00	per lamp
T12 4 ft. Linear Tube Replacing Fluorescent Type B	\$5.50	per lamp
T12 4 ft. Linear Tube Replacing Fluorescent Type C	\$6.50	per lamp

All LED lighting must be ENERGY STAR® or DesignLights Consortium® certified.

LED Lighting per Watt Reduced

Measure	Incentive	Unit	# of Units	Total Incentive
Exterior Lighting HID to LED	\$0.35	per watt reduced		
Garage Lighting HID to LED	\$0.70	per watt reduced		
LED High Bay (per kW saved base)	\$0.70	per watt reduced		
LED Low Bay (per kW saved)	\$0.50	per watt reduced		

Exterior Lighting

Measure	Incentive	Unit	# of Units	Total Incentive
Bi-Level Lighting Fixture - Stairwells, Hallways, Garages	\$40.00	per fixture		
Exterior Area Lighting Fixture ≤ 175 W HID to LED	\$40.00	per fixture		
Exterior Area Lighting Fixture 176 W–250 W HID to LED	\$55.50	per fixture		
Exterior Area Lighting Fixture 251 W–400 W HID to LED	\$65.00	per fixture		
Exterior Area Lighting Fixture 1,000 W HID to LED	\$200.00	per fixture		
Exterior Area Lighting Fixture 1,500 W HID to LED	\$225.00	per fixture		
LED Fuel Pump Canopy Fixture (existing W < 250)	\$50.00	per fixture		
LED Fuel Pump Canopy Fixture (existing W ≥ 250)	\$175.00	per fixture		
LED Mogul-base HID Lamp Replacing Exterior HID (existing W < 250)	\$75.00	per lamp		
LED Mogul-base HID Lamp Replacing Exterior HID (existing W ≥ 250)	\$175.00	per lamp		
LED Outdoor Pole Decorative Fixture (existing W ≥ 250)	\$175.00	per fixture		
LED Parking Garage Fixture (existing W < 250)	\$100.00	per fixture		
LED Parking Garage Fixture (existing W ≥ 250)	\$200.00	per fixture		
LED Parking Lot Fixture (existing W ≥ 250)	\$175.00	per fixture		
LED Parking Lot Fixture (existing W < 250)	\$100.00	per fixture		
LED Wallpack (existing W < 250)	\$60.00	per fixture		

For Michigan Only

Exterior Lighting, continued

Streetlight Fixture ≤ 175 W HID to LED	\$40.00	per fixture		
Streetlight Fixture 176 W–250 W HID to LED	\$55.00	per fixture		
Streetlight Fixture 251 W–400 W HID to LED	\$65.00	per fixture		

All LED lighting must be ENERGY STAR® or DesignLights Consortium® certified.

LED Traffic Signals

Measure	Incentive	Unit	# of Units	Total Incentive
LED Auto Traffic Signal - 8" or 12" Green	\$12.50	per fixture		
LED Auto Traffic Signal - 8" or 12" Red	\$20.00	per fixture		
LED Auto Traffic Signal - 8" or 12" Yellow	\$12.50	per fixture		
LED Pedestrian Signal	\$20.00	per fixture		

LED Exit Sign or Replacement

Measure	Incentive	Unit	# of Units	Total Incentive
LED Exit Sign	\$5.00	per sign		

Exit sign/light combo is rebate eligible; emergency lights are ineligible.

Lighting Controls

Measure	Incentive	Unit	# of Units	Total Incentive
Central Lighting Monitoring & Controls (Non-Networked)	\$800.00	per control		
Daylighting Controls	\$200.00	per control		
Networked Lighting Controls	\$750.00	per control		
Occupancy Sensors	\$25.00	per sensor		

Integral and/or add-on sensors are rebate eligible.

Part 2: HVAC Systems

Heating & Cooling

Measure	Incentive	Unit	# of Units	Total Incentive
CAV to VAV	\$0.50	per sq ft		
Chiller Tune-up	\$400.00	per unit		
Demand Control Ventilation	\$75.00	per 1,000 sq ft cond floor area		

For Michigan Only

Heating & Cooling, continued

Measure	Incentive	Unit	# of Units	Total Incentive
DX Condenser Coil Cleaning	\$5.00	per ton		
Guestroom Energy Management Electric Heat	\$70.00	per unit		
Heat Pump System < 65,000 BTUH 16 SEER	\$80.00	per ton		
Heat Pump System < 65,000 BTUH 17 SEER	\$110.00	per ton		
Heat Pump System < 65,000 BTUH 18 SEER	\$130.00	per ton		
Heat Pump System < 65,000 BTUH 21 SEER	\$180.00	per ton		
Heat Pump System 65,000–135,000 BTUH 16 SEER	\$80.00	per ton		
Heat Pump System 65,000–135,000 BTUH 17 SEER	\$100.00	per ton		
Heat Pump System 65,000–135,000 BTUH 18 SEER	\$130.00	per ton		
Heat Pump System 65,000–135,000 BTUH 21 SEER	\$180.00	per ton		
Heat Pump System > 135,000 BTUH 16 SEER	\$80.00	per ton		
Heat Pump System > 135,000 BTUH 17 SEER	\$100.00	per ton		
Heat Pump System > 135,000 BTUH 18 SEER	\$125.00	per ton		
Heat Pump System > 135,000 BTUH 21 SEER	\$175.00	per ton		
Standard to Cogged Belts	\$5.00	per unit		
Unitary/Split A/C < 65,000 BTUH 16 SEER	\$16.00	per ton		
Unitary/Split A/C < 65,000 BTUH 17 SEER	\$20.00	per ton		
Unitary/Split A/C < 65,000 BTUH 18 SEER	\$30.00	per ton		
Unitary/Split A/C < 65,000 BTUH 21 SEER	\$40.00	per ton		
Unitary/Split A/C 65,000–135,000 BTUH 16 SEER	\$17.50	per ton		
Unitary/Split A/C 65,000–135,000 BTUH 17 SEER	\$20.00	per ton		
Unitary/Split A/C 65,000–135,000 BTUH 18 SEER	\$30.00	per ton		
Unitary/Split A/C 65,000–135,000 BTUH 21 SEER	\$45.00	per ton		
Unitary/Split A/C 135,000–240,000 BTUH 16 SEER	\$17.50	per ton		
Unitary/Split A/C 135,000–240,000 BTUH 17 SEER	\$22.50	per ton		
Unitary/Split A/C 135,000–240,000 BTUH 18 SEER	\$30.00	per ton		
Unitary/Split A/C 135,000–240,000 BTUH 21 SEER	\$45.00	per ton		

Smart Thermostats

Measure	Incentive	Unit	# of Units	Total Incentive
Smart Thermostat	\$100.00	per thermostat		

For Michigan Only

Window Film

Measure	Incentive	Unit	# of Units	Total Incentive
Window Film	\$50.00	per 100 sq ft window area		

Web-Enabled EMS

Measure	Incentive	Unit	# of Units	Total Incentive
BIEMS	\$600.00	per 1,000 sq ft controlled		
Web-Enabled EMS	\$700.00	per 1,000 sq ft controlled		
Web-Enabled EMS with Electric Heat	\$900.00	per 1,000 sq ft controlled		

VFD Fans/Pumps

Measure	Incentive	Unit	# of Units	Total Incentive
VFD added to 1–100 hp HVAC Fans	\$60.00	per hp		
VFD added to 1–100 hp Chilled Water Pump	\$80.00	per hp		
VFD added to 1–100 hp Hot Water Pump	\$90.00	per hp		
VFD for Process Fans 750–2,000 hours - Agriculture	\$15.00	per hp		
VFD for Process Fans > 2,000 hours - Agriculture	\$50.00	per hp		
VSD Process Pump 15 hp	\$50.00	per hp		
VSD Process Pump 20 hp	\$75.00	per hp		
VSD Process Pump 25 hp	\$100.00	per hp		
VSD Process Pump 50 hp	\$150.00	per hp		
VSD Process Pump 100 hp	\$300.00	per hp		

Custom incentives available for VFDs controlling equipment > 100 hp.

VFD Application Type (Table Above)	Fan/Pump/Motor Type	Incentive Rate	Controlled Motor Size (HP)	Qty	Total Incentive

VFD Drive Controls

Measure	Incentive	Unit	# of Units	Total Incentive
Pump and Fan Variable Frequency Drive Controls (Fans)	\$100.00	per control		
Pump and Fan Variable Frequency Drive Controls (Pumps)	\$80.00	per control		

Part 2 Total Incentive

For Michigan Only

Part 3: Commercial Refrigeration

ENERGY STAR® Refrigerators and Freezers

Measure	Incentive	Unit	# of Units	Total Incentive
ENERGY STAR Reach-in Freezer, Glass Doors	\$100.00	per door		
ENERGY STAR Reach-in Freezer, Solid Doors	\$125.00	per door		
ENERGY STAR Reach-in Refrigerator, Glass Doors	\$100.00	per door		
ENERGY STAR Reach-in Refrigerator, Solid Doors	\$125.00	per door		

Commercial Refrigeration Lighting

Measure	Incentive	Unit	# of Units	Total Incentive
LED Case Lighting - Cooler	\$30.00	per door		
LED Case Lighting - Freezer	\$40.00	per door		
LED Refrigerated Space Lighting Replacing T12	\$4.00	per linear ft		
LED Refrigerated Space Lighting Replacing T8	\$2.50	per linear ft		
Occupancy Sensors for LED Case Lighting	\$25.00	per door		

Commercial Refrigeration Motors

Measure	Incentive	Unit	# of Units	Total Incentive
Cold Storage Evaporator ECM Fan Motor - Ag	\$3.00	per hp		
Cold Storage Evaporator ECM Fan Motor - Commercial	\$15.00	per hp		
Commercial ECM Cooler Motors	\$35.00	per motor		
Evaporator Fan Motor Controls	\$55.00	per fan		
Q-Sync Motor for Walk-in and Reach-in Evaporator Fan Motor	\$60.00	per motor		
Variable Speed Condenser Fan	\$200.00	per unit		

Commercial Refrigeration Controls

Measure	Incentive	Unit	# of Units	Total Incentive
Anti-Sweat Heater Controls, Low Temp	\$40.00	per door		
Anti-Sweat Heater Controls, Medium Temp	\$35.00	per door		
Auto Door Closer, Cooler	\$30.00	per door		
Auto Door Closer, Freezer	\$40.00	per door		
Condenser Coil Cleaning - Refrigeration System	\$20.00	per ton		
Display Case Door Retrofit, Low Temp	\$175.00	per door		

For Michigan Only

Commercial Refrigeration Controls, continued

Measure	Incentive	Unit	# of Units	Total Incentive
Display Case Door Retrofit, Medium Temp	\$150.00	per door		
Floating Head Pressure Controls	\$60.00	per ton		
Motion Sensors on LED Cases	\$8.00	per door		
Night Covers - Vertical or Horizontal Night Covers	\$10.00	per case		

Part 3 Total Incentive

Part 4: Commercial Kitchen Equipment

Commercial Kitchen Equipment

Measure	Incentive	Unit	# of Units	Total Incentive
ENERGY STAR Combination Oven	\$1,500.00	per unit		
ENERGY STAR Commercial Dishwasher - Door Type, High Temp	\$600.00	per unit		
ENERGY STAR Commercial Dishwasher - Door Type, Low Temp	\$500.00	per unit		
ENERGY STAR Commercial Hot Holding Cabinets - Full Size	\$500.00	per unit		
ENERGY STAR Commercial Hot Holding Cabinets - Half Size	\$250.00	per unit		
ENERGY STAR Convection Oven	\$500.00	per unit		
ENERGY STAR Fryers	\$500.00	per unit		
ENERGY STAR Ice Machine	\$100.00	per unit		
ENERGY STAR Steam Cookers	\$800.00	per unit		
ENERGY STAR Commercial Griddle	\$750.00	per unit		
Kitchen Exhaust Hood Demand Ventilation Control System	\$100.00	per unit		

Part 4 Total Incentive

For Michigan Only

Part 5: Water Heating

Water Heating

Measure	Incentive	Unit	# of Units	Total Incentive
Faucet Aerator	\$1.00	per aerator		
Heat Pump Water Heater	\$350.00	per unit		
Hot Water Pipe Insulation	\$5.00	per linear ft		
Hot Water Pump	\$25.00	per unit		
Low Flow Pre-Rinse Sprayers	\$25.00	per sprayer		

Part 5 Total Incentive

Part 6: Compressed Air

Compressed Air

Measure	Incentive	Unit	# of Units	Total Incentive
Air Compressor Outdoor Air Intake	\$5.00	per hp		
Compressed Air Pressure Flow Controller Replacing No Flow Controller	\$3.50	per hp		
Compressed Air Storage Tank (≤ 3 gal/cfm baseline)	\$15.00	per hp		
Cycling Compressed Air Dryer Replacing Non-Cycling - Digital Scroll	\$1.00	per SCFM		
Cycling Compressed Air Dryer Replacing Non-Cycling - Thermal Mass	\$0.50	per SCFM		
Desiccant to Refrigerated Air Dryers	\$3.00	per SCFM		
Heat-of-Compression Air Dryer	\$3.00	per SCFM		
Low-Pressure Drop Filters	\$4.00	per hp		
No-Loss Condensate Drains	\$130.00	per drain		
VSD Air Compressor 5 hp	\$ 55.00	per hp		
VSD Air Compressor 10 hp	\$40.00	per hp		
VSD Air Compressor 15 hp	\$45.00	per hp		
VSD Air Compressor 20 hp	\$40.00	per hp		
VSD Air Compressor 25 hp	\$50.00	per hp		
VSD Air Compressor 50 hp	\$110.00	per hp		
VSD Air Compressor 75 hp	\$125.00	per hp		

For Michigan Only

Custom and Prescriptive Rebate Application
Submit applications by email to SaveEnergyAtWork@aep.com

Compressed Air, continued

Measure	Incentive	Unit	# of Units	Total Incentive
VSD Air Compressor 100 hp	\$150.00	per hp		
VSD Air Compressor Replacement (Up to 20 hp) 1 Shift (2,080 hrs/yr)	\$15.00	per hp		
VSD Air Compressor Replacement (Up to 20 hp) 2 Shifts (4,160 hrs/yr)	\$30.00	per hp		
VSD Air Compressor Replacement (Up to 20 hp) 3 Shifts (6,240 hrs/yr)	\$45.00	per hp		
VSD Air Compressor Replacement (21–50 hp) 1 Shift (2,080 hrs/yr)	\$20.00	per hp		
VSD Air Compressor Replacement (21–50 hp) 2 Shifts (4,160 hrs/yr)	\$45.00	per hp		
VSD Air Compressor Replacement (21–50 hp) 3 Shifts (6,240 hrs/yr)	\$65.00	per hp		
VSD Air Compressor Replacement (51–100 hp) 1 Shift (2,080 hrs/yr)	\$25.00	per hp		
VSD Air Compressor Replacement (51–100 hp) 2 Shifts (4,160 hrs/yr)	\$50.00	per hp		
VSD Air Compressor Replacement (51–100 hp) 3 Shifts (6,240 hrs/yr)	\$70.00	per hp		
VSD Condenser Fans 0.5 hp	\$50.00	per hp		
VSD Condenser Fans 1 hp	\$75.00	per hp		
VSD Condenser Fans 1.5 hp	\$100.00	per hp		

Self-Install Leak Audit & Repairs

Measure	Incentive	Unit	# of Units	Total Incentive
Compressed Air Audits & Leak Repair - Non-VSD	\$5.00	per SCFM		
Compressed Air Audits & Leak Repair - VSD	\$5.00	per SCFM		

Leak audit and repairs completed by a compressed air contractor should be submitted through Custom program.
CA leak audits need to be completed 365 days from previous audit.

Part 6 Total Incentive

For Michigan Only

Part 7: Injection Molding

Injection Molding

Measure	Incentive	Unit	# of Units	Total Incentive
Fiber Laser Replacing CO ₂ Laser - 2 Shifts	\$1,500.00	per output kW		
Fiber Laser Replacing CO ₂ Laser - 3 Shifts	\$1,500.00	per output kW		
Injection Molding Insulation	\$105.00	per sq ft		
Injection Molding Machine - Full Electric (Servo Electric)	\$15.00	per ton clamping capacity		
Injection Molding Machine - Electric/Hydraulic Hybrid	\$10.00	per ton clamping capacity		
VSD or Servo Hydraulic Plastic Injection Molder Machines 400 < 600 lb/yr/ton	\$5.00	per ton clamping capacity		
VSD or Servo Hydraulic Plastic Injection Molder Machines 600 < 1,000 lb/yr/ton	\$10.00	per ton clamping capacity		
VSD or Servo Hydraulic Plastic Injection Molder Machines ≥ 1,000 lb/yr/ton	\$20.00	per ton clamping capacity		
VSD Plastic Injection Molding Machine - Constant Disp Base - 1,600–3,000 hours	\$100.00	per hp		
VSD Plastic Injection Molding Machine - Constant Disp Base - 3,001–5,000 hours	\$100.00	per hp		
VSD Plastic Injection Molding Machine - Constant Disp Base - 5,001–8,760 hours	\$100.00	per hp		
VSD Plastic Injection Molding Machine - Variable Disp Base - 1,600–3,000 hours	\$50.00	per hp		
VSD Plastic Injection Molding Machine - Variable Disp Base - 3,001–5,000 hours	\$50.00	per hp		
VSD Plastic Injection Molding Machine - Variable Disp Base - 5,001–8,760 hours	\$50.00	per hp		

Length of Barrel (feet)	Diameter of Barrel	Annual Injection Molding Machine Operating Hours	Barrel Temp (F)	Insulation Thickness (Inches)

Part 7 Total Incentive

For Michigan Only

Part 8: Miscellaneous

Miscellaneous

Measure	Incentive	Unit	# of Units	Total Incentive
3-Phase High-Frequency Battery Charger - 1 Shift	\$200.00	per charger		
3-Phase High-Frequency Battery Charger - 2 Shifts	\$400.00	per charger		
3-Phase High-Frequency Battery Charger - 3 Shifts	\$500.00	per charger		
ENERGY STAR Commercial Washing Machines	\$100.00	per unit		

Battery chargers must meet a 92% minimum efficiency; single or dual.

Part 8 Total Incentive

For Michigan Only

Custom and Prescriptive Rebate Application
 Submit applications by email to SaveEnergyAtWork@aep.com

Preapproval Application Custom Rebate Worksheet



Note: Preapproval applications must be submitted for **all** Custom projects.

Part 1: Project Summary - Please provide description of project.

PROJECT DESCRIPTION	
Before Retrofit <i>(Existing Equipment)</i>	Post-Retrofit <i>(New Equipment Proposed)</i>

Part 2: Energy Savings Summary Table

Project Type	Technology Type	Projected Measure Life	Current Energy Rate (\$/kWh)	Annual Savings (kWh/Yr)(A)	Incentive Rate (\$ per kWh)(B)	Project Cost	Simple Payback Period*	Calculated Incentive (AxB)
<input type="checkbox"/> New Construction <input type="checkbox"/> Retrofit	<input type="checkbox"/> Non-Lighting <input type="checkbox"/> LED Lighting							

*Project payback period must be greater than one year and may not exceed eight years to qualify for an incentive.

Measure	Incentive
Non-Lighting	\$0.07 kWh
LED Lighting	\$0.06 kWh

Part 3: Executive Summary (detailed description of the project and calculations, attach additional documentation as needed). For Custom projects, list old fixtures being removed by describing the quantity of each type of fixture, number of lamps per fixture, watts per lamp, lamp type (metal halide, mercury vapor, T5/T8/T12, and HO if they are HO), and lamp length. Photos of the old fixture, its label showing wattage, and its tube end labels may be submitted.

For Michigan Only

Custom and Prescriptive Rebate Application
Submit applications by email to SaveEnergyAtWork@aep.com

Completion Form - This portion of the application should be completed only once the project is finished.



Note: Complete and submit this Completion Form within 90 days of equipment installation.

FINAL PROJECT SUMMARY		
Company Name (as it appears on utility bill)	Final Total Project Cost	Final Total Incentive

PAYMENT RELEASE AUTHORIZATION (OPTIONAL)			
<p>Complete this section ONLY if incentive payment is to be paid to an entity other than the customer (utility account holder). I AM AUTHORIZING THE PAYMENT OF THE INCENTIVE TO THE THIRD PARTY NAMED BELOW AND I UNDERSTAND THAT I WILL NOT BE RECEIVING THE INCENTIVE PAYMENT. I ALSO UNDERSTAND THAT MY RELEASE TO A THIRD PARTY DOES NOT EXEMPT ME FROM THE PROGRAM REQUIREMENTS OUTLINED IN THE TERMS & CONDITIONS.</p>			
Customer Signature	Print Name	Date	
Payee: Company / Individual Name	Phone Number		
Mailing Address	City	State	ZIP
Payee Tax Payer ID (SSN/FEIN)	Tax Status - Corporation (Inc., LLC, etc.)		

FINAL APPLICATION CHECKLIST & CUSTOMER AGREEMENT	
<p>Final applications must have complete information and be submitted with:</p> <ul style="list-style-type: none"> <input type="checkbox"/> The entire completed application, including the completed incentive worksheets reflecting any applicable quantity or measure change <input type="checkbox"/> The signed customer agreement page with project completion date added <input type="checkbox"/> An itemized invoice from the installing contractor and/or vendor for the project that includes a separate line item for each incentive measure and the date, quantity, size, type, make, and model of installed items, as well as labor costs (if applicable). Internal labor cannot be included in the cost of the project <input type="checkbox"/> The manufacturer (OEM) specification sheets for any items that were part of a project application change <input type="checkbox"/> Copy of payee W-9 <input type="checkbox"/> Copy of recent, active I&M utility bill for site location(s) 	
<p>I hereby certify that the information contained in this application is accurate and complete, all rules of this incentive program have been followed, and I have read and understand the terms and conditions.</p> <p>I AGREE TO VERIFICATION OF EQUIPMENT INSTALLATION, WHICH MAY INCLUDE A SITE INSPECTION BY A PROGRAM OR UTILITY REPRESENTATIVE. I UNDERSTAND THAT I AM NOT ALLOWED TO RECEIVE MORE THAN ONE INCENTIVE FROM THIS PROGRAM ON ANY PIECE OF EQUIPMENT. I HEREBY AGREE TO INDEMNIFY, HOLD HARMLESS, AND RELEASE THE UTILITY FROM ANY ACTIONS OR CLAIMS IN REGARD TO THE INSTALLATION, OPERATION, AND DISPOSAL OF EQUIPMENT (AND RELATED MATERIALS) COVERED HEREIN, INCLUDING LIABILITY FROM ANY INCIDENTAL OR CONSEQUENTIAL DAMAGE.</p>	
Customer Signature	Project Completion Date
Print Name	

Submit one of two ways:

SaveEnergyAtWork@aep.com

I&M C&I Rebates
 7128 Lakeview Pkwy Dr. W
 Indianapolis, IN 46268

For Michigan Only