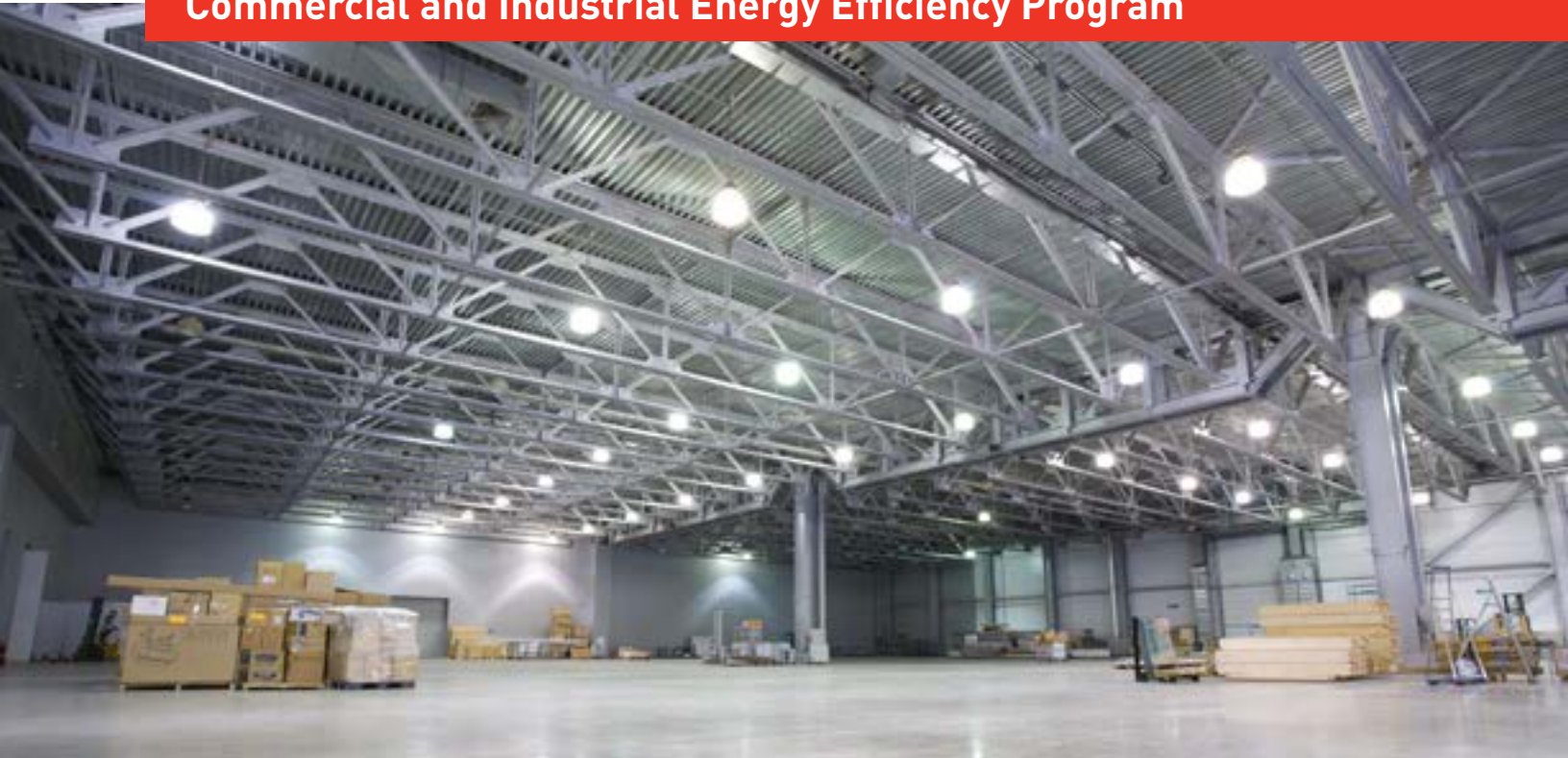




An **AEP** Company

Commercial and Industrial Energy Efficiency Program



INDIANA MICHIGAN POWER

Custom and Prescriptive Rebate Application

2023

For Indiana Only

Welcome to Indiana Michigan Power's Commercial and Industrial Program



Please follow the four-step process to apply for and obtain incentives for your energy efficiency projects.

The business must be a current electric commercial or industrial customer of Indiana Michigan Power to participate.

Incomplete applications cannot be processed for payment.

Notification of incomplete applications will be sent via email. Applicants will be given 15 business days to respond before the application is deemed ineligible. Applications must be received within 90 days of purchase and/or installation of measures. Pre-approval application is required in advance of Custom projects.

Need help?

Call us at 833-997-0708 (Mon.–Fri., 9 a.m.–5 p.m.) or email SaveEnergyAtWork@aep.com

Submit one of two ways:



SaveEnergyAtWork@aep.com



I&M C&I Rebates
16350 Felton Rd.
Lansing, MI 48906

Project process:

1. Complete and submit the pre-approval application.

Submit a pre-approval application and all required documentation before making any purchases or starting any work on the project. Pre-approval is required on ALL Custom projects and is also required on Prescriptive projects that will receive a rebate of \$20,000 or more.

- General Information (page 4) and appropriate pages for your project.
 - Prescriptive (pages 6–12)
 - Custom (page 13)
- An itemized quote from selected vendor that includes the quantity, size, type, make and model of proposed items and labor costs, if applicable. Internal labor cannot be included in project cost.
- The manufacturer (OEM) specification sheets for all eligible measures per program guidelines. Certain measures must have ENERGY STAR® or DLC energy efficiency certification to qualify for rebates.

2. Obtain pre-approval notice.

Upon verifying that the project meets the program requirements, the customer and contractor listed on this application will receive a letter via email (or standard mail if email is unavailable) indicating the funds have been reserved for this project.

- Incomplete applications will result in delays.
- Applications for Prescriptive projects <\$20,000 calculated rebate do not require pre-approval.
- The pre-approval letter must be signed by the customer and returned within 10 business days.
- From the date of issuance of this letter, you will have 90 days or until December 15, 2023 to complete your projects. Applicant may submit a written request for one 30-day project completion extension.
- After 90 days or on December 15, 2023, this application will expire and the reserved funds will be forfeited.

3. Install your project.

After signing and returning pre-approval notification (if applicable to the project), remove the old equipment and install the new equipment. Incomplete applications will result in delays.

- Only new products, which are exact product types listed in this application, are eligible for Prescriptive incentives.

4. Complete and submit the Completion Form.

- Submit the Completion Form (page 16), including all project invoices, after the project is completed.

For Indiana Only

Custom and Prescriptive Rebate Application
Submit applications by email to SaveEnergyAtWork@aep.com

Terms and Conditions

ELIGIBILITY: Indiana Michigan Power ("I&M") energy efficiency incentives are offered to qualifying electric customers only while funding is available. Projects must be implemented (completed) by December 15, 2023. All application documentation must be submitted within 90 days of project completion or December 15, 2023. Projects must reduce electric usage through system efficiency improvements, control upgrades may also qualify. The following measures will not qualify: peak shaving, demand reductions, fuel switching, power generation, renewable energy, or operating schedule changes. Equipment must meet the minimum number of annual operating hours.

COMPLIANCE: All projects must comply with applicable federal, state, and local laws and building codes. All equipment must be new or retrofitted with new components per program specification. Used or rebuilt equipment is not eligible for incentives. Existing equipment must be removed or permanently disconnected. New equipment must meet specification requirements and existing equipment must be operational when the application is submitted. Only one incentive will be granted for each project. Customers can submit multiple projects in a calendar year; however, the incentive totals cannot exceed the incentive limit cap per year. If the project is in a leased building, the lease term must be at least three (3) years and a copy of the lease may be requested. Up to 24 months of utility usage information may be requested.

INCENTIVE CAPS: Incentive caps may not exceed 75% of the total project cost, including materials, external labor, permits, equipment rental or disposal. Custom incentives will not be provided for projects with less than a 1-year simple payback or greater than an 8-year simple payback. Retro-commissioning measures are not required to meet these payback guidelines. Incentives are limited to an annual \$150,000 cap per site or \$300,000 cap if your business has multiple sites participating, while Program funding is available.

INSPECTION: Program staff reserves the right to conduct pre-inspections and post inspections of proposed and installed projects.

PUBLICITY: I&M reserves the right to publicize your participation in this program, unless you specifically request otherwise.

LOGO USE: Customers or allies may not use the I&M name or logo nor that of any participating utilities in any marketing, advertising, or promotional material without written permission. If interested in co-branding, please contact I&M at SaveEnergyAtWork@aep.com for permission.

PROGRAM DISCRETION: Incentives are available on a first-come, first-served basis. Incentive amounts and offerings are subject to change or termination without notice at the discretion of I&M.

PAYMENT: Once completed paperwork is submitted, incentive payments are usually made within 6–8 weeks. Incomplete applications will delay payments or result in denial of application approval. I&M reserves the right to refuse payment and participation if the customer or contractor violates program terms and conditions. I&M must receive 100% of the energy savings for the rated life of the product(s) or for a period of three (3) years from the receipt of incentive, whichever is less. If you do not provide the energy savings, the facility in which the installed projects are located closes or ceases operation within three (3) years from receipt of incentive, or you cease to be a customer of I&M within (3) years, you shall refund a prorated amount of the incentive.

RELEASE/INDEMNIFICATION: Payment of rebates under the Program and/or evaluation of applications for rebates shall not deem I&M or any of its affiliates, employees, contractors or agents ("I&M Parties") to be responsible for any work completed in connection herewith. Applicant fully releases I&M Parties from any and all claims it may have against I&M Parties in connection with this application, the rebates or the work performed in connection with them. In addition, applicant agrees to defend, indemnify and hold I&M Parties harmless from and against any and all claims, losses, demands or lawsuits by any third parties arising in connection with this application, the payment or non-payment of rebates, or any work performed in connection with them. The customer hereby releases I&M and participating utilities from any and all liability arising from or connected with releasing the information to I&M set forth herein.

For Indiana Only

Pre-Approval Application General Information



CUSTOMER INFORMATION <i>(Please complete all fields.)</i>				
Company Name <i>(as it appears on utility bill)</i>		Tax Payer ID <i>(FEIN or SS#)</i>		
Contact	Email	Phone Number		
Mailing Address		City	State	ZIP
Installation Address <i>(if different)</i>		City	State	ZIP
Utility Account Number	Electric Utility Indiana Michigan Power	Annual Hours of Operation	Bldg. Area <i>(sq. ft.)</i>	
Building Use <input type="checkbox"/> Office <input type="checkbox"/> Grocery/supermarket <input type="checkbox"/> Healthcare <input type="checkbox"/> Restaurant <input type="checkbox"/> Warehouse <input type="checkbox"/> Manufacturing <input type="checkbox"/> School <input type="checkbox"/> Lodging <input type="checkbox"/> Other <input type="checkbox"/> Retail		How Did You Learn About This Program? <input type="checkbox"/> Indiana Michigan Power <input type="checkbox"/> Newspaper <input type="checkbox"/> Indiana Michigan Power website <input type="checkbox"/> Community event <input type="checkbox"/> Mail/bill insert <input type="checkbox"/> Other <input type="checkbox"/> Contractor		

CONTRACTOR INFORMATION <i>(If applicable)</i>				
Company Name				
Contact	Email	Phone Number		
Address		City	State	ZIP

INITIAL APPLICATION PROJECT SUMMARY		
Estimated Project Completion Date <i>(required)</i>	Prescriptive Project Total Cost \$	Prescriptive Incentive Total \$
	Custom Project Total Cost \$	Custom Incentive Total \$
	Total Project Cost \$	Total Incentive \$

For additional information about eligibility and incentive caps, see Terms & Conditions.

For Indiana Only

Custom and Prescriptive Rebate Application
Submit applications by email to SaveEnergyAtWork@aep.com

Table of Contents

Part 1: LED Lighting & Controls	6
Part 2: HVAC.....	8
Part 3: Commercial Refrigeration	10
Part 4: Commercial Kitchen	11
Part 5: Water Heating.....	11
Part 6: Compressed Air.....	12
Part 7: Injection Molding.....	13
Part 8: Misc.	14
Custom Rebate Worksheet.	15
Completion Form.....	16

For Indiana Only

Part 1: LED Lighting & Controls

Interior Lighting

Measure	Incentive	Unit	# of Units	Total Incentive
DeLamp Fluorescent Fixture Average Lamp Wattage 28W	\$3.00	per lamp		
LED Light Fixture replacing 2x2 2L T8/T12 Fixture	\$5.00	per fixture		
LED Light Fixture replacing 3L 4ft. 32 W T8/T12 Fixture	\$11.00	per fixture		
LED Light Fixture replacing 4L 4ft. 32 W T8/T12 Fixture	\$15.00	per fixture		
LED Light Fixture replacing 6L 4ft. 32 W T8/T12 Fixture	\$20.00	per fixture		
LED Light Fixture replacing 8L 4ft. 32 W T8/T12 Fixture	\$25.00	per fixture		
LED High Bay Fixture (Industrial Application Only)	\$40.00	per fixture		
LED Low Bay Fixture (Industrial Application Only)	\$40.00	per fixture		
LED Downlight Fixture	\$5.00	per fixture		
LED Downlight, Screw-in lamp, 1-3W, Interior Average 2 Watts	\$1.00	per lamp		
LED Downlight, Screw-in lamp, 4-20W, Interior Average 11 Watts	\$1.00	per lamp		
LED Mogul-base HID Lamp Replacing High Bay HID	\$25.00	per lamp		
LED Mogul-base HID Lamp Replacing Low Bay HID	\$25.00	per lamp		
LED MR16 Replacing Incandescent	\$5.25	per bulb		
LED Fluorescent Tube Relamp ≤4 ft. replacing 4 ft. T5/T8/T12 Tube	\$4.50	per tube		
LED Fluorescent Tube Relamp ≤4 ft. replacing High Output 4 ft. T5/T8 Tube	\$7.50	per tube		
LED T8 Tube Replacement with Lower Wattage LED Tube	\$3.00	per tube		
LED Troffer Retrofit Kit, 2'x2' and 2'x4'	\$15.00	per fixture		
LED Troffer, 2'x2' and 2'x4'	\$15.00	per fixture		
LED Wallpack (existing W<250)	\$25.00	per fixture		
Replace 400 W HID with LED (Retrofit Kit) Interior	\$45.00	per lamp		
Replace Interior Fixture ≤175 W HID with LED	\$40.00	per fixture		
Replace Interior Fixture 176 W-250 W HID with LED	\$65.00	per fixture		
Replace Interior Fixture 251 W-400 W HID with LED	\$75.00	per fixture		

All LED lighting must be ENERGY STAR or DLC certified.

For Indiana Only

Custom and Prescriptive Rebate Application
Submit applications by email to SaveEnergyAtWork@aep.com

Exterior Lighting

Measure	Incentive	Unit	# of Units	Total Incentive
Bi-Level Lighting Fixture – Stairwells, Hallways, and Garages	\$25.00	per fixture		
Exterior Area Lighting Fixture ≤175 W HID to LED	\$40.00	per fixture		
Exterior Area Lighting Fixture 176 W–250 W HID to LED	\$55.50	per fixture		
Exterior Area Lighting Fixture 251 W–400 W HID to LED	\$65.00	per fixture		
Exterior Area Lighting Fixture 1,000 W HID to LED	\$200.00	per fixture		
Exterior Area Lighting Fixture 1,500 W HID to LED	\$225.00	per fixture		
LED Fuel Pump Canopy Fixture (existing W<250)	\$25.00	per fixture		
LED Fuel Pump Canopy Fixture (existing W≥250)	\$25.00	per fixture		
LED Mogul-base HID Lamp Replacing Exterior HID (existing W<250)	\$25.00	per lamp		
LED Mogul-base HID Lamp Replacing Exterior HID (existing W≥250)	\$25.00	per lamp		
LED Outdoor Pole Decorative Fixture (existing W≥250)	\$25.00	per fixture		
LED Parking Garage Fixture (existing W<250)	\$25.00	per fixture		
LED Parking Garage Fixture (existing W≥250)	\$25.00	per fixture		
LED Parking Lot Fixture (existing W<250)	\$25.00	per fixture		
LED Parking Lot Fixture (existing W≥250)	\$25.00	per fixture		
Streetlight Fixture ≤175 W HID to LED	\$40.00	per fixture		
Streetlight Fixture 176 W–250 W HID to LED	\$55.00	per fixture		
Streetlight Fixture 251 W–400 W HID to LED	\$65.00	per fixture		

All LED lighting must be ENERGY STAR or DLC certified.

LED Exit Sign or Replacement

Measure	Incentive	Unit	# of Units	Total Incentive
LED Exit Sign	\$5.00	per sign		

Exit sign/light combo is rebate eligible; emergency lights are ineligible.

Lighting Controls

Measure	Incentive	Unit	# of Signs	Total Incentive
Occupancy Sensors	\$20.00	per sensor		
Daylighting Controls	\$125.00	per control		

*Integral and/or add-on sensors are rebate eligible.

Part 1 Total Incentive

For Indiana Only

Custom and Prescriptive Rebate Application
 Submit applications by email to SaveEnergyAtWork@aep.com

Part 2: HVAC

Heating & Cooling

Measure	Incentive	Unit	# of Units	Total Incentive
Chiller Tune-up	\$15.00	per ton		
DX Condenser Coil Cleaning	\$2.00	per ton		
Heat Pump System <65,000 BTUH 16 SEER	\$80.00	per ton		
Heat Pump System <65,000 BTUH 17 SEER	\$110.00	per ton		
Heat Pump System <65,000 BTUH 18 SEER	\$130.00	per ton		
Heat Pump System <65,000 BTUH 21 SEER	\$180.00	per ton		
Heat Pump System 65,000–135,000 BTUH 16 SEER	\$80.00	per ton		
Heat Pump System 65,000–135,000 BTUH 17 SEER	\$100.00	per ton		
Heat Pump System 65,000–135,000 BTUH 18 SEER	\$130.00	per ton		
Heat Pump System 65,000–135,000 BTUH 21 SEER	\$180.00	per ton		
Heat Pump System > 135,000 BTUH 16 SEER	\$80.00	per ton		
Heat Pump System > 135,000 BTUH 17 SEER	\$100.00	per ton		
Heat Pump System > 135,000 BTUH 18 SEER	\$125.00	per ton		
Heat Pump System > 135,000 BTUH 21 SEER	\$175.00	per ton		
Unitary/Split AC <65,000 BTUH 16 SEER	\$16.00	per ton		
Unitary/Split AC <65,000 BTUH 17 SEER	\$20.00	per ton		
Unitary/Split AC <65,000 BTUH 18 SEER	\$30.00	per ton		
Unitary/Split AC <65,000 BTUH 21 SEER	\$40.00	per ton		
Unitary/Split AC 65,000–135,000 BTUH 16 SEER	\$17.50	per ton		
Unitary/Split AC 65,000–135,000 BTUH 17 SEER	\$20.00	per ton		
Unitary/Split AC 65,000–135,000 BTUH 18 SEER	\$30.00	per ton		
Unitary/Split AC 65,000–135,000 BTUH 21 SEER	\$45.00	per ton		
Unitary/Split AC 135,000–240,000 BTUH 16 SEER	\$17.50	per ton		
Unitary/Split AC 135,000–240,000 BTUH 17 SEER	\$22.50	per ton		
Unitary/Split AC 135,000–240,000 BTUH 18 SEER	\$30.00	per ton		
Unitary/Split AC 135,000–240,000 BTUH 21 SEER	\$45.00	per ton		

For Indiana Only

Custom and Prescriptive Rebate Application
Submit applications by email to SaveEnergyAtWork@aep.com

Smart Thermostats

Measure	Incentive	Unit	Total Tons	Total Incentive
Smart Thermostat	\$25.00	per thermostat		

Window Film

Measure	Incentive	Unit	# of Units	Total Incentive
Window Film	\$50.00	Per 100 sq. ft. Window Area		

Web-Enabled EMS

Measure	Incentive	Unit	# of Units	Total Incentive
Web-enabled EMS	\$70.00	per 100 sq. ft. controlled		
Web-enabled EMS with Electric Heat	\$600.00	per 100 sq. ft. controlled		

VFD Fans/Pumps

Measure	Incentive	Unit	# of Units	Total Incentive
VFD added to 1–20 HP Process Pump	\$50.00	per hp		
VFD added to 1–20 HP HVAC Fans	\$60.00	per hp		
VFD added to 1–20 HP Chilled Water Pump	\$80.00	per hp		
VFD added to 1–20 HP Hot Water Pump	\$90.00	per hp		

*Custom incentives available for VFDs controlling equipment >20 HP.

VFD Application Type (Table Above)	Fan/Pump/Motor Type	Incentive Rate	Controlled Motor Size (HP)	Qty.	Total Incentive

Part 2 Total Incentive

For Indiana Only

Custom and Prescriptive Rebate Application
Submit applications by email to SaveEnergyAtWork@aep.com

Part 3: Commercial Refrigeration

ENERGY STAR® Certified Refrigerators and Freezers

Measure	Incentive	Unit	# of Units	Total Incentive
Energy Star Certified Reach-In Freezer, Glass Doors	\$70.00	per door		
Energy Star Certified Reach-In Freezer, Solid Doors	\$70.00	per door		
Energy Star Certified Reach-In Refrigerator, Glass Doors	\$30.00	per door		
Energy Star Certified Reach-In Refrigerator, Solid Doors	\$30.00	per door		

Commercial Refrigeration Lighting

Measure	Incentive	Unit	# of Units	Total Incentive
LED Case Lighting – Cooler	\$30.00	per door		
LED Case Lighting – Freezer	\$40.00	per door		
Occupancy Sensors for LED Case Lighting	\$25.00	per door		
LED Refrigerated Space Lighting Replacing T8	\$2.50	per linear ft.		

Commercial Refrigeration Motors

Measure	Incentive	Unit	# of Units	Total Incentive
Commercial ECM Cooler Motors	\$50.00	per motor		
Evaporator Fan Motor Controls	\$45.00	per fan		
Q-Sync Motor for Walk-In and Reach-In Evaporator Fan Motor	\$35.00	per motor		

Commercial Refrigeration Controls

Measure	Incentive	Unit	# of Units	Total Incentive
Anti-Sweat Heater Controls, Low Temp	\$25.00	per door		
Anti-Sweat Heater Controls, Mid Temp	\$25.00	per door		
Auto Door Closer, Cooler	\$25.00	per door		
Auto Door Closer, Freezer	\$25.00	per door		
Night Covers – Vertical or Horizontal Night Covers	\$10.00	per case		
Floating Head Pressure Controls	\$25.00	per ton		
Display Case Door Retrofit, Low Temp	\$150.00	per door		
Display Case Door Retrofit, Mid Temp	\$150.00	per door		
Motion Sensors on LED Cases	\$8.00	per door		

For Indiana Only

Custom and Prescriptive Rebate Application
Submit applications by email to SaveEnergyAtWork@aep.com

Part 3 Total Incentive

Part 4: Commercial Kitchen

Commercial Kitchen Equipment

Measure	Incentive	Unit	# of Units	Total Incentive
ENERGY STAR Certified Dishwasher – Door Type, High Temp	\$375.00	per unit		
ENERGY STAR Certified Dishwasher – Door Type, Low Temp	\$375.00	per unit		
ENERGY STAR Certified Dishwasher – Multi-Tank Conveyor, High Temp	\$500.00	per unit		
ENERGY STAR Certified Dishwasher – Multi-Tank Conveyor, Low Temp	\$500.00	per unit		
ENERGY STAR Certified Dishwasher – Single Tank Conveyor, High Temp	\$1,000.00	per unit		
ENERGY STAR Certified Dishwasher – Single Tank Conveyor, Low Temp	\$1,000.00	per unit		
ENERGY STAR Certified Dishwasher – Under-Counter, High Temp	\$60.00	per unit		
ENERGY STAR Certified Dishwasher – Under-Counter, Low Temp	\$25.00	per unit		
ENERGY STAR Certified Hot Holding Cabinets – Full Size	\$75.00	per unit		
ENERGY STAR Certified Hot Holding Cabinets – 3/4 Size	\$125.00	per unit		
ENERGY STAR Certified Fryers	\$10.00	per unit		
ENERGY STAR Certified Steam Cookers				
3 Pan	\$100.00	per unit		
4 Pan	\$350.00	per unit		
5 Pan	\$400.00	per unit		
6 Pan	\$550.00	per unit		
Energy Star Certified Ice Machine	\$40.00	per unit		

Part 4 Total Incentive

Part 5: Water Heating

Measure	Incentive	Unit	# of Units	Total Incentive
Faucet Aerator	\$1.00	per aerator		
Heat Pump Water Heater	\$150.00	per unit		
Hot Water Pipe Insulation	\$10.00	per linear ft.		
Low Flow Pre-Rinse Sprayers	\$25.00	per sprayer		

Part 5 Total Incentive

For Indiana Only

Custom and Prescriptive Rebate Application
Submit applications by email to SaveEnergyAtWork@aep.com

Part 6: Compressed Air

Compressed Air

Measure	Incentive	Unit	# of Units	Total Incentive
Air Compressor Outdoor Air Intake	\$5.00	per hp		
Compressed Air Pressure Flow Controller replacing no flow controller	\$3.50	per hp		
Compressed Air Storage Tank (≤3 gal./cfm baseline)	\$15.00	per hp		
Cycling Compressed Air Dryer replacing non-cycling – Digital Scroll	\$1.00	per SCFM		
Cycling Compressed Air Dryer replacing non-cycling – Thermal mass	\$0.50	per SCFM		
Cycling Compressed Air Dryer replacing non-cycling – VSD	\$1.00	per SCFM		
Desiccant to Refrigerated Air Dryers	\$2.50	per SCFM		
Heat-of-Compression Air Dryer	\$2.50	per SCFM		
Low Pressure Drop Filters	\$4.00	per hp		
No-Loss Condensate Drains	\$250.00	per drain		
VSD Air Compressor Replacement (< 100-HP), 1 shift (2,080 hrs./yr.)	\$40.00	per hp		
VSD Air Compressor Replacement (< 100-HP) 2 shifts (4,160 hrs./yr.)	\$40.00	per hp		
VSD Air Compressor Replacement (< 100-HP) 3 shifts (6,240 hrs./yr.)	\$40.00	per hp		
VSD Air Compressors – Retrofit	\$40.00	per hp		

Self-Installed Leak Audit & Repairs

Measure	Incentive	Unit	# of Units	Total Incentive
Compressed Air Audits & Leak Repair – VSD	\$5.00	per detected SCFM leak		
Compressed Air Audits & Leak Repair – non-VSD	\$5.00	per detected SCFM leak		

Leak audit and repairs completed by a compressed air contractor should be submitted through Custom program

For Indiana Only

Custom and Prescriptive Rebate Application
Submit applications by email to SaveEnergyAtWork@aep.com

Part 6 Total Incentive

Part 7: Injection Molding

Measure	Incentive	Unit	# of Units	Total Incentive
Injection Molding Machine – Full Electric (Servo Electric)	\$15.00	per ton clamping capacity		
Injection Molding Machine – Electric/Hydraulic Hybrid	\$10.00	per ton clamping capacity		
VSD or Servo Hydraulic Plastic Injection Molder Machines 1,000 and greater lb./yr./ton	\$6.00	per ton clamping capacity		
VSD or Servo Hydraulic Plastic Injection Molder Machines ≥ 600 < 1,000 lb./yr./ton	\$4.00	per ton clamping capacity		
VSD or Servo Hydraulic Plastic Injection Molder Machines ≥ 400 < 600 lb./yr./ton	\$3.00	per ton clamping capacity		
VSD Plastic Injection Molding Machine – Constant Disp base – 1,600–3,000 hours	\$50.00	per HP		
VSD Plastic Injection Molding Machine – Constant Disp base – 3,001–5,000 hours	\$50.00	per HP		
VSD Plastic Injection Molding Machine – Constant Disp base – 5,001–8,760 hours	\$50.00	per HP		
VSD Plastic Injection Molding Machine – Variable Disp base – 1,600–3,000 hours	\$50.00	per HP		
VSD Plastic Injection Molding Machine – Variable Disp base – 3,001–5,000 hours	\$50.00	per HP		
VSD Plastic Injection Molding Machine – Variable Disp base – 5,001–8,760 hours	\$50.00	per HP		
Fiber Laser Replacing CO2 Laser – two shifts	\$975.00	per output kW		
Fiber Laser Replacing CO2 Laser – three shifts	\$975.00	per output kW		
Injection Molding Insulation	\$105.00	per sq. ft.		

Length of barrel (feet)	Diameter of barrel	Annual Injection molding machine operating hours (hours)	Barrel Temperature (F)	Insulation thickness (inches)

Part 7 Total Incentive

For Indiana Only

Part 8: Misc.

Measure	Incentive	Unit	# of Units	Total Incentive
Cold Storage Evaporator ECM Fan Motor – Commercial	\$35.00	per hp		
Cold Storage Evaporator ECM Fan Motor – Ag	\$35.00	per hp		
3-phase High Frequency Battery Charger – 1 shift	\$100.00	per charger		
3-phase High Frequency Battery Charger – 2 shifts	\$200.00	per charger		
3-phase High Frequency Battery Charger – 3 shifts	\$300.00	per charger		
ENERGY STAR Certified Commercial Washing Machines	\$35.00	per unit		

Part 8 Total Incentive

For Indiana Only

Custom and Prescriptive Rebate Application
Submit applications by email to SaveEnergyAtWork@aep.com

Note: Pre-Approval Applications must be submitted for **all** Custom projects

Part 1: Project Summary – Please provide description of project.

PROJECT DESCRIPTION	
Before Retrofit <i>(Existing Equipment)</i>	Post Retrofit <i>(New Equipment Proposed)</i>

Part 2: Energy Savings Summary Table

Project Type	Technology Type	Projected Measure Life	Current Energy Rate (\$/kWh)	Annual Savings (kWh/Yr)(A)	Incentive Rate (\$ per kWh)(B)	Project Cost	Simple Payback Period*	Calculated Incentive (AxB)
<input type="checkbox"/> New Construction <input type="checkbox"/> Retrofit	<input type="checkbox"/> Non-Lighting <input type="checkbox"/> LED Lighting							

*Project payback period must be greater than one year and may not exceed eight years to qualify for an incentive.

Measure	Incentive
Non-Lighting	\$0.06 kWh
LED Lighting	\$0.05 kWh

Part 3: Executive Summary (detailed description of the project and calculations, attach additional documentation as needed). For Custom projects, list old fixtures being removed by describing the quantity of each type of fixture, number of lamps per fixture, watts per lamp, lamp type (metal halide, mercury vapor, T5/T8/T12 and HO if they are HO), and lamp length. Photos of the old fixture and its label showing wattage, and tube end labels, may be submitted.

For Indiana Only

Completion Form: This portion of the application should be completed only once the project is finished.



Note: Complete and submit this Completion Form within 90 days of equipment installation.

FINAL PROJECT SUMMARY		
Company Name (as it appears on utility bill)	Final Total Project Cost	Final Total Incentive

PAYMENT RELEASE AUTHORIZATION (OPTIONAL)			
<p>Complete this section ONLY if incentive payment is to be paid to an entity other than the customer (utility account holder).</p> <p>I AM AUTHORIZING THE PAYMENT OF THE INCENTIVE TO THE THIRD PARTY NAMED BELOW AND I UNDERSTAND THAT I WILL NOT BE RECEIVING THE INCENTIVE PAYMENT. I ALSO UNDERSTAND THAT MY RELEASE TO A THIRD PARTY DOES NOT EXEMPT ME FROM THE PROGRAM REQUIREMENTS OUTLINED IN THE TERMS & CONDITIONS.</p>			
Customer Signature	Print Name	Date	
Payee: Company / Individual Name	Phone Number		
Mailing Address	City	State	ZIP
Payee Tax Payer ID (SSN/FEIN)	Tax Status—Corporation (Inc., LLC, etc.)		

FINAL APPLICATION CHECKLIST & CUSTOMER AGREEMENT	
<p>Final applications must have complete information and be submitted with:</p> <ul style="list-style-type: none"> <input type="checkbox"/> The entire completed application, including the completed incentive worksheets reflecting any applicable quantity or measure change <input type="checkbox"/> The signed customer agreement page with project completion date added <input type="checkbox"/> An itemized invoice from the installing contractor and/or vendor for the project, which includes a separate line item for each incentive measure, and the date, quantity, size, type, make and model of installed items, as well as labor costs (if applicable). Internal labor cannot be included in the cost of the project <input type="checkbox"/> The manufacturer (OEM) specification sheets for any items that were part of a project application change <input type="checkbox"/> Copy of payee W-9 <input type="checkbox"/> Copy of recent, active I&M utility bill for site location(s) 	
<p>I hereby certify that the information contained in this application is accurate and complete, all rules of this incentive program have been followed, and I have read and understand the Terms and Conditions.</p> <p>I AGREE TO VERIFICATION OF EQUIPMENT INSTALLATION, WHICH MAY INCLUDE A SITE INSPECTION BY A PROGRAM OR UTILITY REPRESENTATIVE. I UNDERSTAND THAT I AM NOT ALLOWED TO RECEIVE MORE THAN ONE INCENTIVE FROM THIS PROGRAM ON ANY PIECE OF EQUIPMENT. I HEREBY AGREE TO INDEMNIFY, HOLD HARMLESS, AND RELEASE THE UTILITY FROM ANY ACTIONS OR CLAIMS IN REGARD TO THE INSTALLATION, OPERATION AND DISPOSAL OF EQUIPMENT (AND RELATED MATERIALS) COVERED HEREIN, INCLUDING LIABILITY FROM ANY INCIDENTAL OR CONSEQUENTIAL DAMAGE.</p>	
Customer Signature	Project Completion Date
Print Name	

Submit one of two ways:

SaveEnergyAtWork@aep.com

I&M C&I Rebates
16350 Felton Rd.
Lansing, MI 48906

For Indiana Only

Custom and Prescriptive Rebate Application
Submit applications by email to SaveEnergyAtWork@aep.com